



Help us to make the roads around the Barnes Farm schools safer

The school, its pupils and 3PR are trying to reduce the traffic and congestion that can build up outside of schools during drop-off and pick-up times.

There has been an increasing number of reports of dangerous parking around the school grounds. The school has also received complaints from our neighbours in Blacklock about inconsiderate parking.

We would like to remind all parents and carers to park safely, legally and considerately in the roads around school. Not only does this keep children, parents, carers, staff and visitors safe, but it also helps to create a better relationship between the school and its neighbours.

Please consider leaving a little earlier in the morning and using the car park at Asda. There are plenty of safe spaces to park and it is just a short walk from the supermarket to school.

Our School Parking Liaison Officer has recently paid a visit to the school grounds to assess the parking situation. Please see the map (overleaf) for more details on these issues and how we can all work together to avoid dangerous and inconsiderate parking.

Thank you for your cooperation.



Remember the 3 parking rules or 3PR's

1 Care

- Be careful where you park
- Don't cause an obstruction
- Use a car park if available

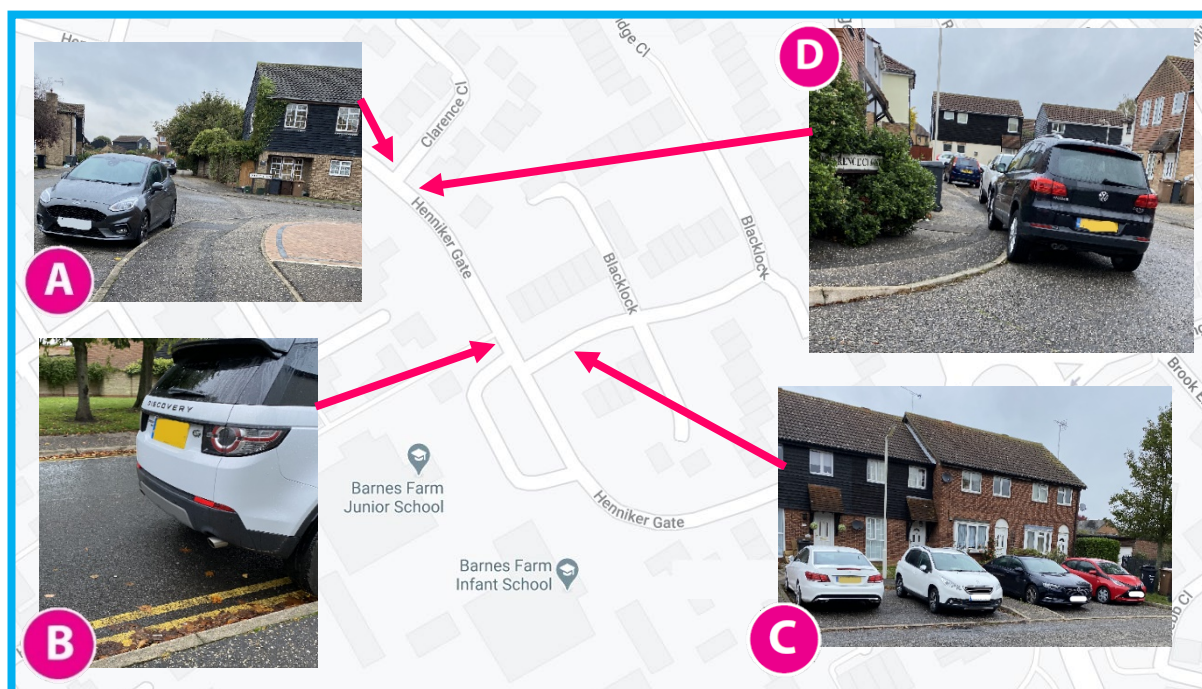
2 Consideration

- Respect the school's parking policy
- Always consider the neighbours
- Don't block driveways
- Be polite and courteous
- If possible, walk or cycle instead

3 Caution

- Look out for other children, not just your own
- Always observe the speed limits
- Stay off the pavement

Here's how it works:



A. Parking on junctions

The Highway Code states that you must not park on, opposite or within 10 metres of a junction. Parking here reduces drivers' visibility as they pull onto and out of the roads around school, thereby increasing the likelihood of an accident.

B. Parking on restrictions

You will see both single and double yellow lines along Henniker Gate. You must not stop or park on double yellow lines at any time and you must not stop or park on single yellow lines during the restricted times (which cover the drop-off and pick-up periods).

These lines keep the road outside school safe and prevent congestion at busy times. Parking here not only narrows the road but may also result in drivers receiving a Penalty Charge Notice if an enforcement officer is in the area.

C. Parking on the pavement

Not only does this damage the pavements and make them bumpy and unsafe for

pedestrians, but pulling up onto the pavement risks hitting a pedestrian you didn't see coming. Furthermore, parking on the pavement prevents those with wheelchairs and buggies from passing with ease. This car is also parked across a dropped kerb, which may prevent these individuals from crossing the road. Please remember our simple rule: roads are for cars and pavements are for people!

E. Blocking driveways

The spaces on Blacklock are intended for use by the local residents. Please avoid parking in empty spaces, as you never know when one of our neighbours may wish to return to their property.

When parking in the other residential roads around the Barnes Farm Schools, please avoid parking across, close to or directly opposite driveways, as this prevents our neighbours from leaving or returning to their property with ease.

Remember! Always use the 3 parking rules ('care, caution and consideration') when parking.
www.schoolparking.org.uk